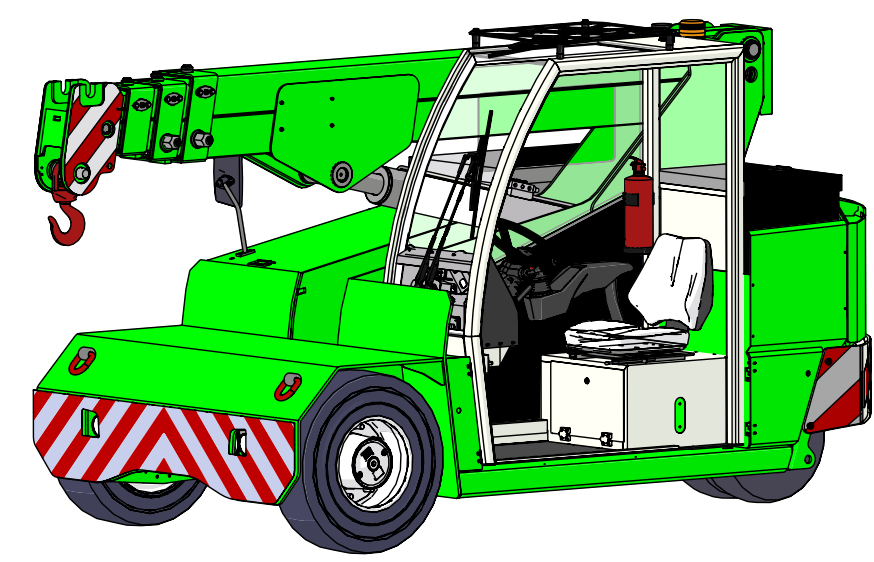


Data subject to change without prior notice
Edition 12/2019 © 2019 JMG Cranes S.p.A. All rights reserved



Electric Pick & Carry Cranes

JMG Cranes S.p.A.
Via Sito Nuovo 14
29010 Sarmato (PC) - Italy
t +39 0523 8486
e info@jmgcranes.com

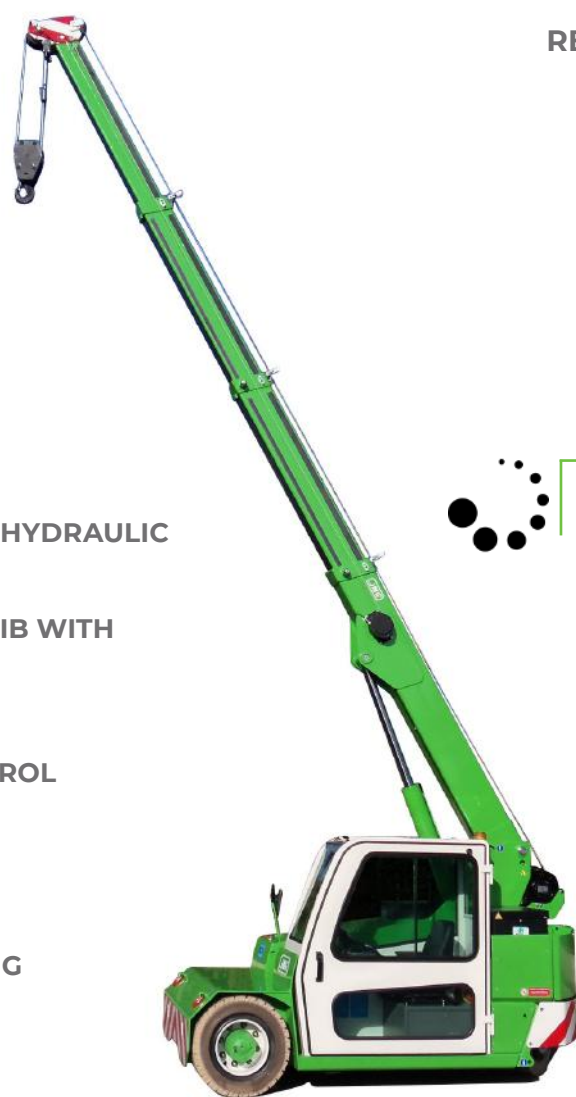


MC 60 (metric)
Max Capacity 6,000 kg

www.jmgcranes.com



HYDRAULICALLY TELESCOPING PROPORTIONALLY TYPE BOOM
FRONT-WHEELS DRIVE WITH COUNTER ROTATION
REMOVABLE COUNTERWEIGHTS
180° REAR STEERING



Options :

- HYDRAULIC WINCH
- HYDRAULIC JIB WITH HYDRAULIC EXTENSION
- BENDABLE MANUAL JIB WITH MANUAL EXTENSION
- NON-MARKING TIRES
- RADIO REMOTE CONTROL
- HYDRAULIC FORKS
- MAN BUCKET
- ATEX CONVERSION
- CUSTOMIZED PAINTING



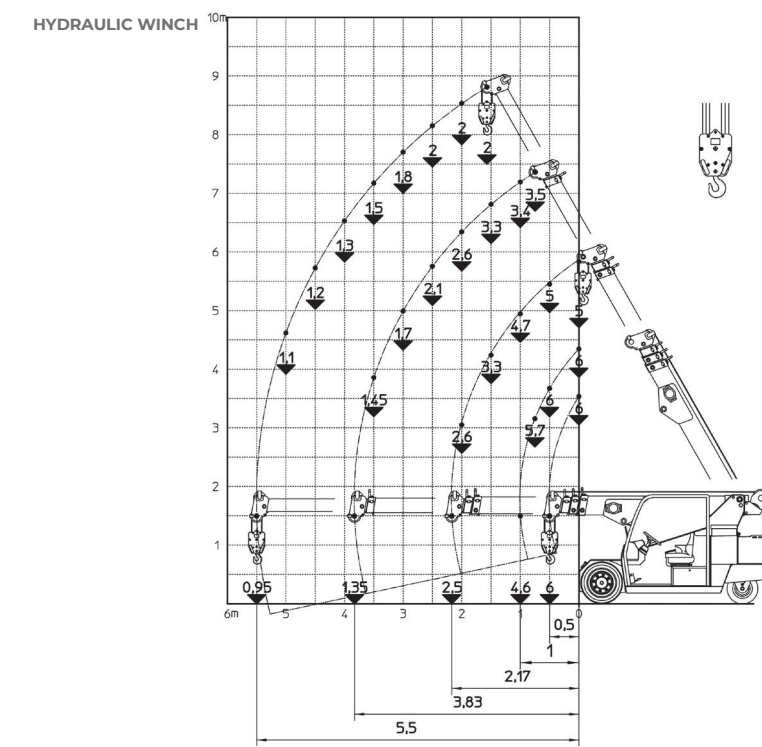
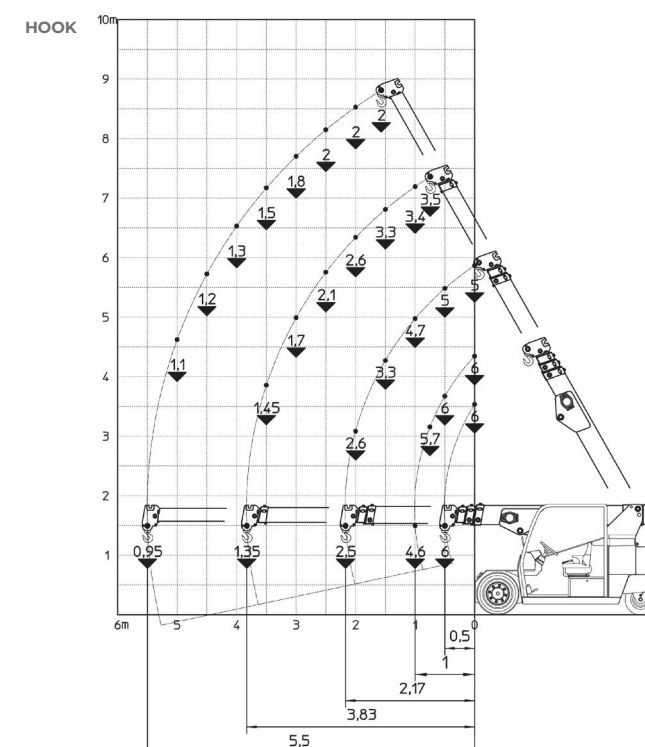
Load charts



Technical features

Max Capacity kg	6,000
Dimension mm	3200x1650x1860

Front-wheels drive. 1 electric motors AC 7,5 kW 80V Insulation class H	LMI Electronic safe load indicator and tilting moment limiter
Total Kg. 6,500	Hydraulically foot controlled service brake on all wheels, hydraulically automatic or button controlled parking brake on front wheels
72 V - 575 Ah 8 working hours	Fabricated from preformed and welded quality steel plate
Front nr. 4 superelastic 250-15" Rear nr. 2 superelastic 21x8-15"	+60°/-15°
Rear Steering angle -90°/+90°	Motor driven pump 1x12 kW-80 V AC



EU Standards CE

	UNI ISO 4030-1: A3
	2006/42 CE MD-2014/30 CE EMC - 2014/35 CE LVD - 2000/14 e and subsequent modifications
	EN 13000:2014 UNI ISO 4301-2:2011 and subsequent modifications



Dimensions

